

Series MPG-N2 SIZE 20 FLAT-DESIGN HAND WHEEL

US \$280.00 (Sgl. Dial)
S.R.P. List Price



FEATURES

- 2" O.D. Compact size MPG
- Flat-design
- Zinc metal dial & body
- 100 ppr Std. only
- Dual Quadrature Channels
- Line driver 5v and TTL 5v Outputs

SPECIFICATIONS

Electrical

| | | |
|-----------------------|---|------------|
| Outputs | Line Driver | TTL (NPN) |
| Pulse per Revolution | 100 PPR | |
| Supply Voltage | 5 v±0.25 v | 5 v dc |
| Output Voltage (VH) | ≥2.5 v | Vcc -1.0 v |
| Output Voltage (VL) | ≤0.5 v | |
| Current Requirement | ≤60 mA (No Loading) | |
| Sink Current | ≤20 mA | |
| Output Capacity | Sync. Current: 20 mA, Residual Voltage: ≤0.5 v | |
| Phase Difference | Quadrature Square Wave A & B: 90°±45° (T/4±T/8) | |
| Rise/Fall Time | ≤2 μs | |
| Frequency Response | 0-10 kHz | |
| Insulation Resistance | 20 MΩ At 500 v dc Megger (Circuit-Body) | |

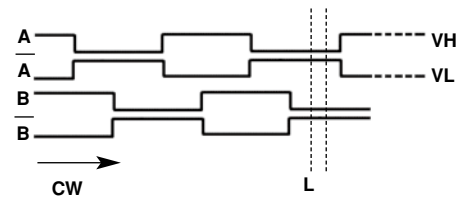
Mechanical

| | |
|---------------------|---|
| Dial Rotating Speed | 600 r/min. Max., 200 r/min.-Normal (Continuous) |
| Starting Torque | 8.34 ozf-in (600 gf-cm) at 25°C |
| Rotational Life | 10x 6 bits turns at ≤ 200 rpm |
| Weight | 8 oz. (270g) |

Environmental

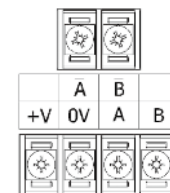
| | |
|-----------------------|--------------------------------------|
| Operating Temperature | 0° to 60° C |
| Humidity | RH 35% to 90% no condensation |
| Storage Temperature | 0° to 80° C |
| Vibration | 10-50 Hz/1.5mm X, Y, Z - 2 hrs. each |
| Shock | 50 G per 11 ms |
| Enclosure | IP50/NEMA 12 |

OUTPUT WAVE FORMS



Relation between output signals
and click stop position.

ELECTRICAL CONNECTION



Linedriver Outputs

Series MPG-N2 / Size 20 Flat-Design Hand Wheel/Metal Sgl. Dial

| MODEL NUMBER | SPECIFICATION | LIST PRICE |
|----------------------|--|------------|
| MPG-N2-100-L5 | 100 Pulse, 5vDC, Linedriver Output, Quadrature Dual Channels | \$280.00 |
| MPG-N2-100-T | 100 Pulse, 5vDC, TTL Output, Quadrature Dual Channels | \$280.00 |

Dimensions (mm)

