

Series MPG-N1 SIZE 20 HAND WHEEL



FEATURES

- 2" O.D. Compact size MPG
- Panel plate Sandwich design
- Black Plastic dial & body with matt finish
- 100 ppr Std.
- Dual Quadrature Channels
- Line driver 5v differential outputs

SPECIFICATIONS

Electrical

| | |
|-----------------------|---|
| Outputs | Line Driver |
| Pulse per Revolution | 100 PPR |
| Supply Voltage | 5 v±0.25 v |
| Output Voltage (VH) | ≥2.5 v |
| Output Voltage (VL) | ≤0.5 v |
| Current Requirement | ≤60 mA (No Loading) |
| Sink Current | ≤20 mA |
| Output Capacity | Sync. Current: 20 mA, Residual Voltage: ≤0.5 v |
| Phase Difference | Quadrature Square Wave A & B: 90°±45° (T/4±T/8) |
| Rise/Fall Time | ≤2 μs |
| Frequency Response | 0-10 kHz |
| Insulation Resistance | 20 MΩ At 500 v dc Megger (Circuit-Body) |

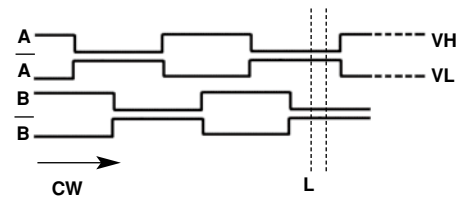
Mechanical

| | |
|---------------------|---|
| Dial Rotating Speed | 600 r/min. Max., 200 r/min.-Normal (Continuous) |
| Starting Torque | 8.34 ozf-in (600 gf-cm) at 25°C |
| Rotational Life | 10x 6 bits turns at ≤ 200 rpm |
| Weight | 6 oz. (200g) |

Environmental

| | |
|-----------------------|--------------------------------------|
| Operating Temperature | 0° to 60° C |
| Humidity | RH 35% to 90% no condensation |
| Storage Temperature | 0° to 80° C |
| Vibration | 10-50 Hz/1.5mm X, Y, Z - 2 hrs. each |
| Shock | 50 G per 11 ms |
| Enclosure | IP50/NEMA 12 |

OUTPUT WAVE FORMS



Relation between output signals and click stop position.

ELECTRICAL CONNECTION



Linedriver Outputs

Series MPG-N1 / Size 20 Hand Wheel/Plastic Sgl. Dial

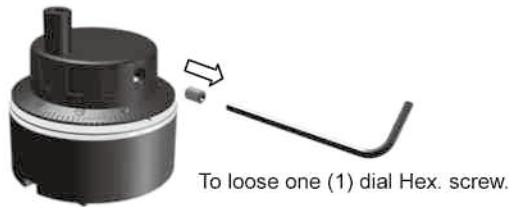
1-800-903-9093

| MODEL NUMBER | SPECIFICATION | LIST PRICE |
|---------------|--|------------|
| MPG-N1-100-L5 | 100 Pulse, 5vDC, Linedriver Output, Quadrature Dual Channels | \$280.00 |

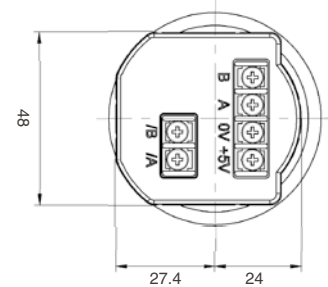
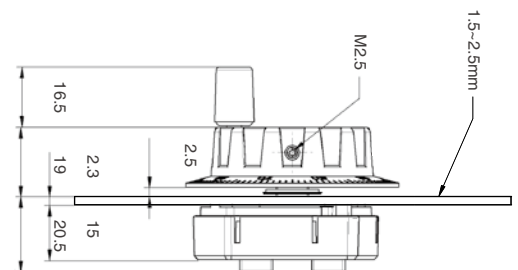
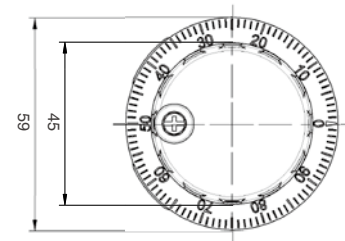
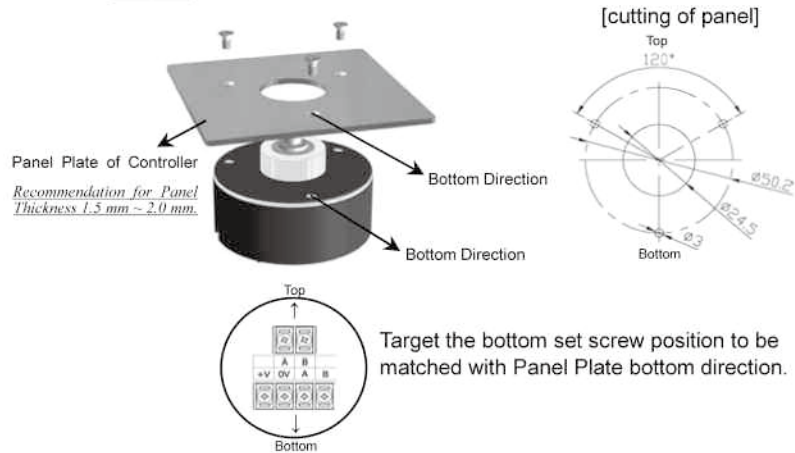
Mounting Instructions

Dimensions (mm)

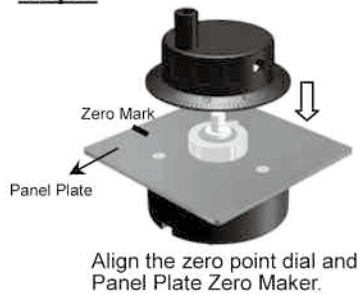
Step 1



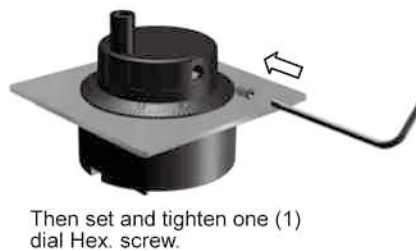
Step 2



Step 3



Step 4



Accessories

