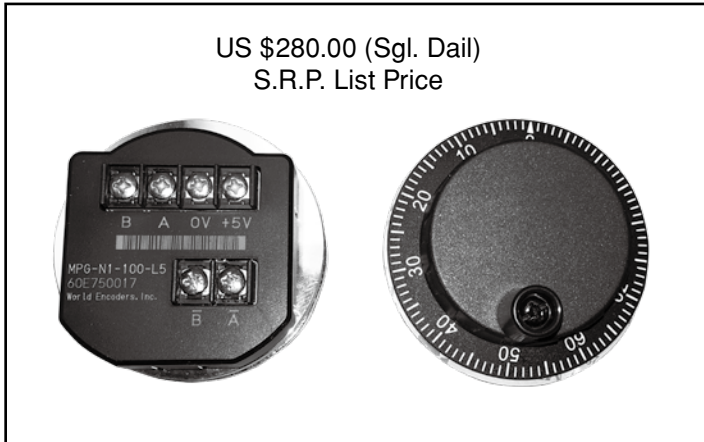


Series MPG-N1 SIZE 20 HAND WHEEL

US \$280.00 (Sgl. Dail)
S.R.P. List Price



FEATURES

- 2" O.D. Compact size MPG
- Panel plate Sandwich design
- Black Plastic dial & body with matt finish
- 100 ppr Std.
- Dual Quadrature Channels
- Line driver 5v differential outputs

SPECIFICATIONS

Electrical

Outputs	Line Driver
Pulse per Revolution	100 PPR
Supply Voltage	5 v±0.25 v
Output Voltage (VH)	≥2.5 v
Output Voltage (VL)	≤0.5 v
Current Requirement	≤60 mA (No Loading)
Sink Current	≤20 mA
Output Capacity	Sync. Current: 20 mA, Residual Voltage: ≤0.5 v
Phase Difference	Quadrature Square Wave A & B: 90°±45° (T/4±T/8)
Rise/Fall Time	≤2 μs
Frequency Response	0-10 kHz
Insulation Resistance	20 MΩ At 500 v dc Megger (Circuit-Body)

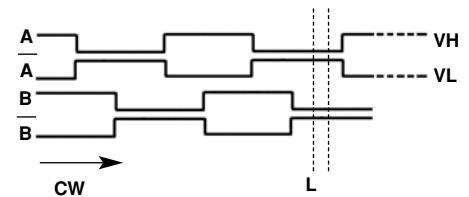
Mechanical

Dial Rotating Speed	600 r/min. Max., 200 r/min.-Normal (Continuous)
Starting Torque	8.34 ozf-in (600 gf-cm) at 25°C
Rotational Life	10x 6 bits turns at ≤ 200 rpm
Weight	6 oz. (200g)

Environmental

Operating Temperature	0° to 60° C
Humidity	RH 35% to 90% no condensation
Storage Temperature	0° to 80° C
Vibration	10-50 Hz/1.5mm X, Y, Z - 2 hrs. each
Shock	50 G per 11 ms
Enclosure	IP50/NEMA 12

OUTPUT WAVE FORMS



Relation between output signals and click stop position.

ELECTRICAL CONNECTION



Linedriver Outputs

Series MPG-N1 / Size 20 Hand Wheel/Plastic Sgl. Dial

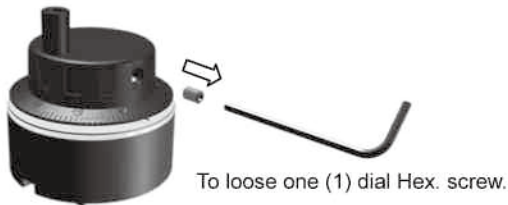
1-800-903-9093

MODEL NUMBER	SPECIFICATION	LIST PRICE
MPG-N1-100-L5	100 Pulse, 5vDC, Linedriver Output, Quadrature Dual Channels	\$280.00

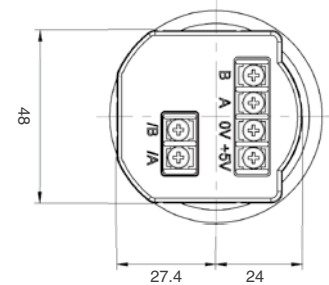
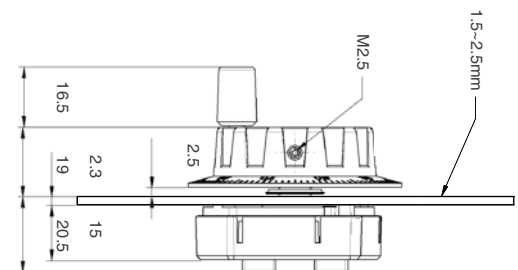
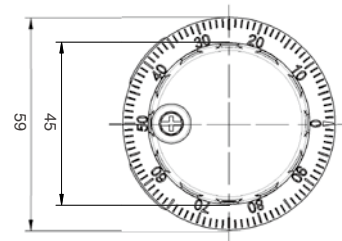
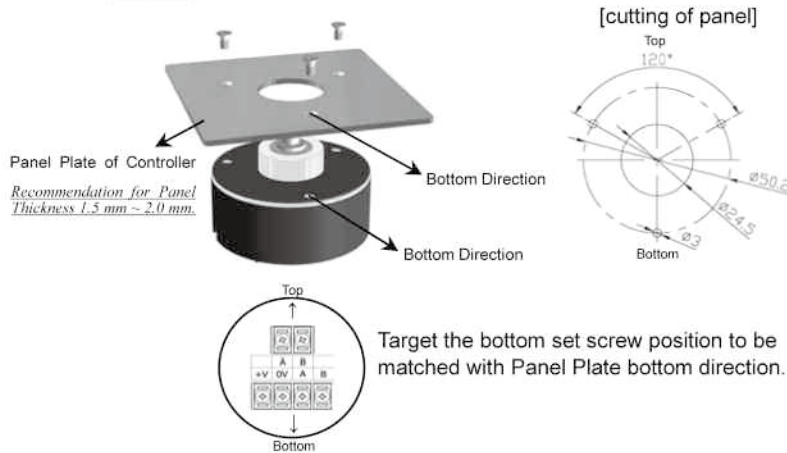
Mounting Instructions

Dimensions (mm)

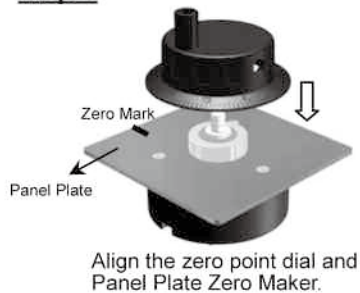
Step 1



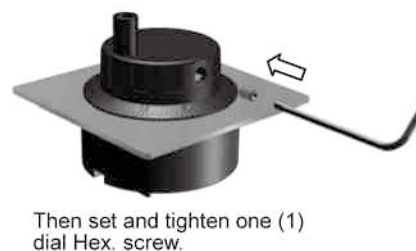
Step 2



Step 3



Step 4



Accessories

