

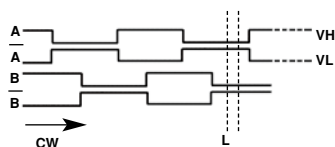
Series iPHD/iHDW Pendant Hand-held

with E-Stop (2-Contacts), 2-Enable, Jog+, Jog-, F1 SW's



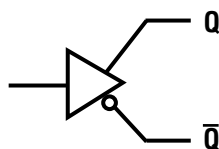
US \$980.00
S.R.P.
List Price

OUTPUT WAVE FORMS



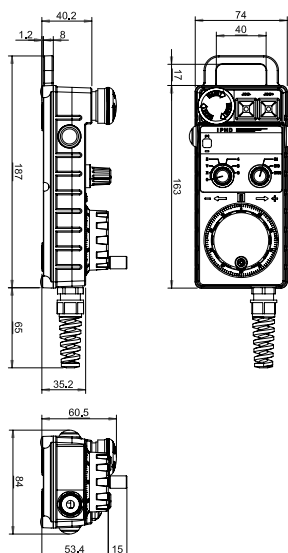
Relation between output signals and click stop position.

OUTPUT CIRCUIT



26LS31 or equivalent
Recommended line receiver: 26LS32

OUTLINE DRAWINGS



FEATURES

- Safety Level 3, conforms to EN418
- 2-Contacts E-Stop SW, 2-Enable SW (R & L)
- Jog+, Jog-, F1 function SW's
- Multiplier x1, x10, x100 and X-Y-Z-4-5 or X-Y-Z-4-5-6 axis selector SW's
- 5v Linedriver and 5v TTL outputs (Point to point)
- IP65, NAMA 4 enclosure protection
- Std. 16 ft. extended spiral cable
- Std. Magnets attached in rear
- Amp CPC Size 17 & Amphenol Allow Size 24 connector kit
- Euchner HBA-072 910 interchangeable model available in stock. (Binary code 0-Z-X-Y-4-5 axis)

SPECIFICATIONS

Electrical

Outputs	Line Driver	TTL Voltage Output for FANUC
Pulse per Revolution	100 PPR	
Supply Voltage	5 v±0.25 v dc	5 v±0.25 v dc
Output Voltage (VH)	≥2.5 v	≥4.0 v
Output Voltage (VL)	≤0.5 v	≤0.5 v
Current Requirement	≤60 mA (No Loading)	
Sink Current	≤20 mA	
Output Capacity	Sync. Current: 20 mA, Residual Voltage: ≤0.5 v	
Phase Difference	Quadrature Square Wave A & B: 90°±45° (T/4±T/8)	
Rise/Fall Time	≤2 μs	
Frequency Response	0-10 kHz	
Insulation Resistance	20 MΩ At 500 v dc Megger (Circuit-Body)	
Spiral Cable	16 ft. extended, 25/26 pol., 22-24 AWG	

Mechanical

Dial Rotating Speed	500 r/min.-Max., 200 r/min.-Normal (Continuous)
Starting Torque	8.34 ozf-in (600 gf-cm) at 25°C
Rotational Life	10x 6 bits turns at ≤ 200 rpm
Weight	3 lbs (1.5 kg)

Environmental

Operating Temperature	0° to 60° C
Humidity	RH 35% to 90% no condensation
Storage Temperature	0° to 80° C
Vibration	10-50 Hz/1.5mm X, Y, Z - 2 hrs. each
Shock	50 G per 11 ms
Enclosure	IP65/NEMA 4

Rotary Switch

Max. Voltage	30 v dc
Current / Switch Life	50 mA / ≥25,000 cycles

Emergency Stop Switch

DC Load Resistance	30 vdc, 1.0 A IDEC # XA1E-BV3U02R
--------------------	-----------------------------------

Enable Switch

DC Load Resistance	50 vdc, 100 mA Dailywell # PAS6B1M1CES-5
--------------------	--

NOTE: Jog+, Jog-, F1 SW's Specifications are Momentary and Normally Open.

Series iPHD/iHWD Pendant Head-Held with E-Stop (2-Contacts), 2-Enable, Jog+, Jog-, F1 SW's

MODEL NUMBER	SPECIFICATION	LIST PRICE
iPHD-FOE6L-IM	100 Pulse 5v DC, Linedriver Output, E-Stop (2-Contacts) SW, 2-Enable SW (R+L), Two (2) Mode SW's (6 axis & multiplier), Jog+, Jog-, F1 Function SW's, 5m (16ft.) Spiral Cable	\$980.00
iPHD-FOA5L-IM	100 Pulse 5v DC, TTL Output, E-Stop (2-Contacts) SW, 2-Enable SW (R+L), Two (2) Mode SW's (5 axis & multiplier), Jog+, Jog-, F1 Function SW's, 5m (16ft.) Spiral Cable	\$980.00
iPHD-FOECL-IM	Euchner HBA-072 910 Interchangeable Model, (Binary Code 0-Z-X-Y-4-5 axis) 100 Pulse, 5v DC, Linedriver Output, E-Stop (2-Contracts) SW (R+L), Two (2) Mode SW's (5 axis & multiplier), Jog+, Jog-, F1 Function SW's, 5m (16 ft.) Spiral Cable	\$1,020.00
iHWD-BPE5L-IM	IPG Photonics Model (Formerly: iPHD-FOE5L-IM) 100 Pulse 5v DC, Linedriver Output, E-stop(2-Contacts) SW, 5 Axis, 2-Enable SW (R+L), Jog+, Jog-, 5m (16 ft.) Spiral Cable	\$1,020.00

MODEL	PRICE
Amp CPC Size 17 connector kit	\$90.00
1.3"O.D., 0.75" I.D., 28 pos., #18-28 AWG Gold Solder 1-#206039-1 Plug, 28-#66570-3 Pin, 28-#66569-3 Socket, 1-#206038-1 Mating Receptacle 1-#207241-1 Cable Boot, 1-#207387 Cable Grip	



MODEL	PRICE
Amp CPC Size 23 connector kit	\$190.00
1.73"O.D., 1.20" I.D., 24 pos., #20-26 AWG Gold Solder 1-#206037-1 Plug, 24-#66182-1 Pin, 24-#66183-1 Socket, 1-#206038-Mating Receptacle, 1-#206138-8 Cable Clamp, 1-#CF20MA-BK Strain Relief	



MODEL	PRICE
Amphenol Alloy Size 24 connector kit	\$90.00
1.7"O.D., 1.2" I.D., 24 pos., Size 24-28, 1-1/2"-18 UNEF 1-#MS3106F24-28P Straight Cable Plug with 24 Pin-Solder-Contacts, 1-Cable Clamp Backshell, 1-Rubber Grommet 1-#MS3102E24-28S Mating Receptacle with 24 Socket-Solder-Contacts, 1-Rubber Washer 1-1/4"O.D. x 3/8" I.D. x 1/16" 1-#AN3420-16, 1-#AN3420-6 Rubber Bushing Boots	

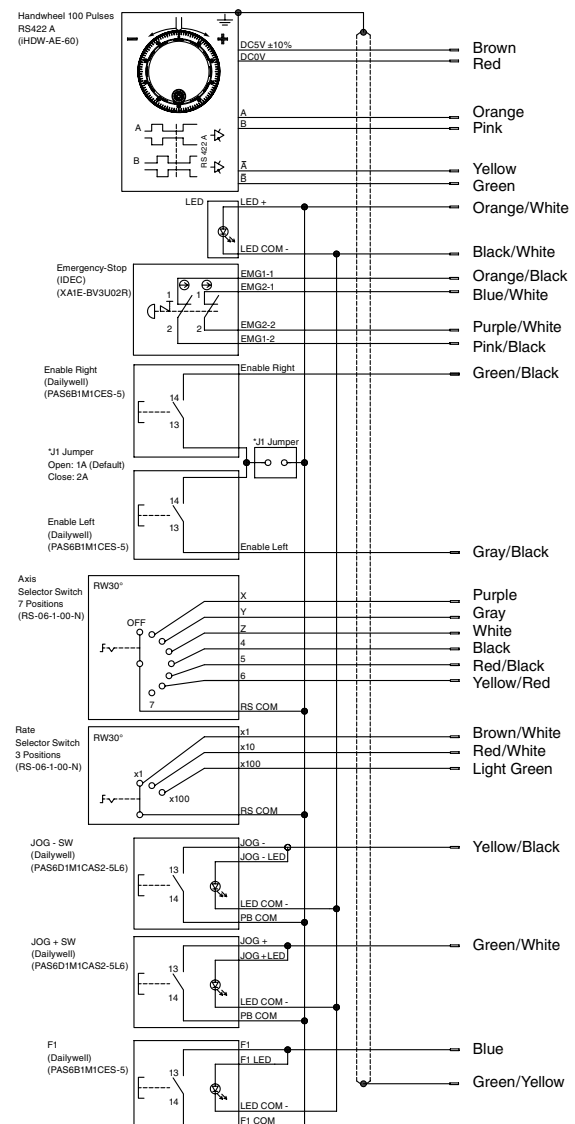


MODEL	PRICE
EE-6C004-A01	\$280.00
Replacement *5 m (16 ft.) Spiral Cable (25 wires) D.I.Y. Work* 5 m (16 ft.) -Extended length. Shrunk length= approx. 6 ft.	



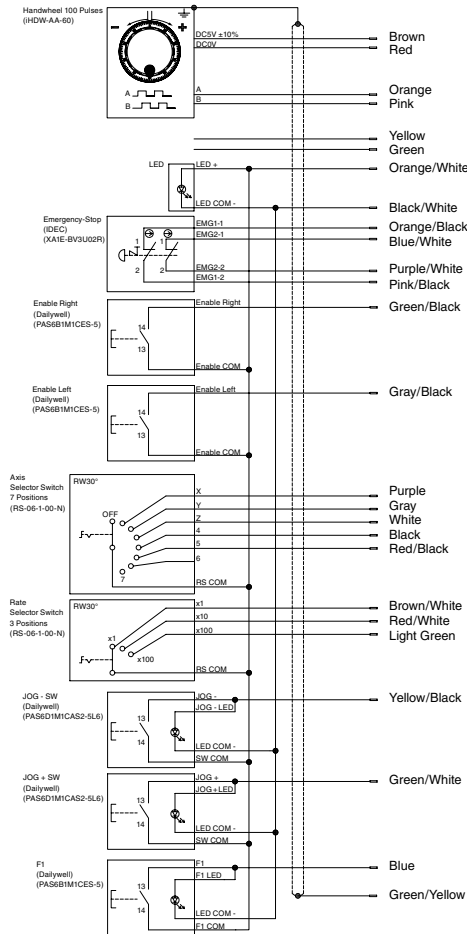
WIRING DIAGRAM

iPHD-FOE6L-IM (6 axis, 5v Line Driver, PTP)

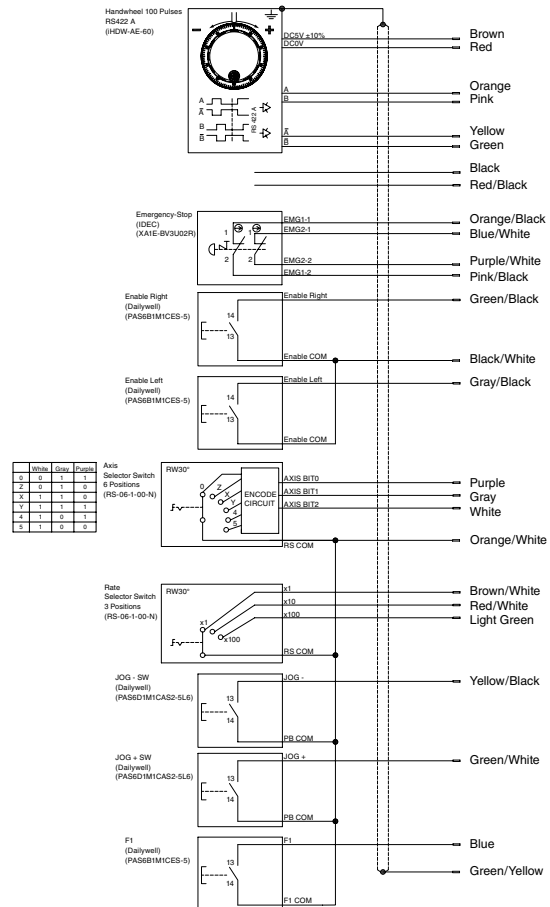


WIRING DIAGRAM

iPHD-FOA5L-IM (5 axis, 5v TTL, PTP)



iPHD-FOECL-IM (5 axis, 5v Line Driver, Binary)



HPG (CNC-B00)/MHDW(CNC-D00) Pendant Hand-held for Brother CNC Tapping Center

HPG / MHDW

HPG (CNC-B00)/MHDW(CNC-D00) Pendant Hand-held for Brother CNC Tapping Center

MODEL NUMBER	SPECIFICATION	LIST PRICE
HPG-B-100-L-CL	CNC-B00, Pendant Hand-held (Rugged Metal Housing), No E-Stop SW MPG 100ppr,5v Lindriver, 2-Rotary SW's-Axis AW, Multiplier SW 3 meter spiral cable with Nanaboshi Plug end. 12 pins-Binary Code PCB	\$980.00
MHDW-LEBS-C26	CNC-D00, Pendant Hand-held (Rugged Metal Housing), w/ E-Stop SW MPG 100ppr,5v Lindriver, 2-Rotary SW's-Axis AW, Multiplier SW 3 meter spiral cable with JAE Military Plug end. 19pins-Binary Code PCB Enable SW, E-Stop SW, Rear Magnets	\$1,180.00

Reference: <http://worldencoders.com/products/hpg/hpg.html>